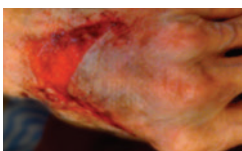


# Skin Tear Classification & Decision Algorithm<sup>1</sup>



**Type 1: No skin loss**  
Linear or flap tear which can be repositioned to cover the wound bed





**Type 2: Partial flap loss**  
Flap cannot be repositioned to cover the wound

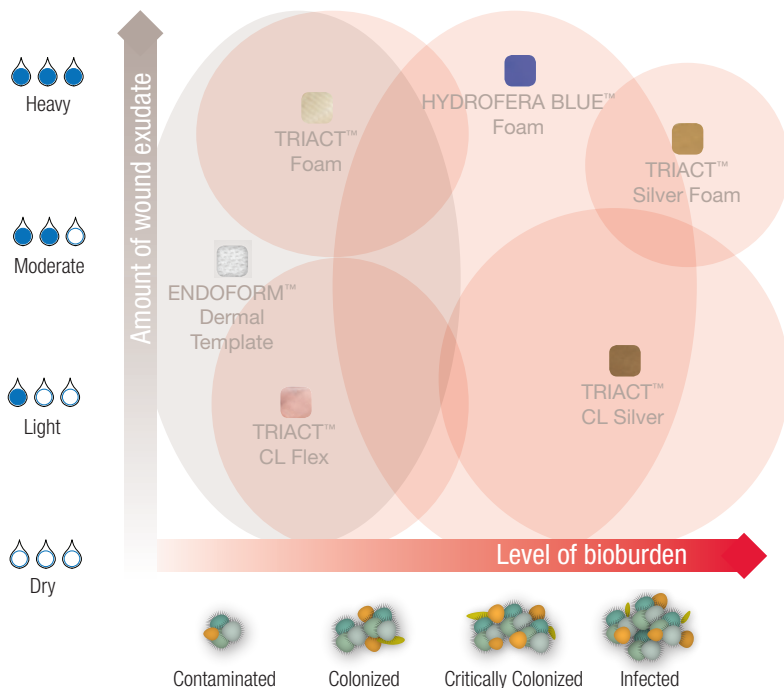


**Type 3: Total flap loss**  
Entire wound bed is exposed

<sup>1</sup>LeBlanc K., Baranoski S., et al. International Skin Tear Advisory Panel: A Tool Kit to Aid in the Prevention, Assessment, and Treatment of Skin Tears Using a Simplified Classification System. *Advances in Skin and Wound Care*. 2013;26:459-476.

# Skin Tear Solutions

-  Suitable for Types 2 and 3 skin tears and for MMP reduction
-  Suitable for Types 1, 2, and 3 skin tears



**Hollister Incorporated**  
 2000 Hollister Drive  
 Libertyville, Illinois 60048 USA  
 1.888.740.8999

[www.hollisterwoundcare.com](http://www.hollisterwoundcare.com)



## Skin Tear Management Options from Hollister Wound Care:

- Endoform dermal template
- Non-adherent TRIACT dressings
- Hydrofera Blue foam



© 2013 Hollister Incorporated. Printed in USA 922438-1013